

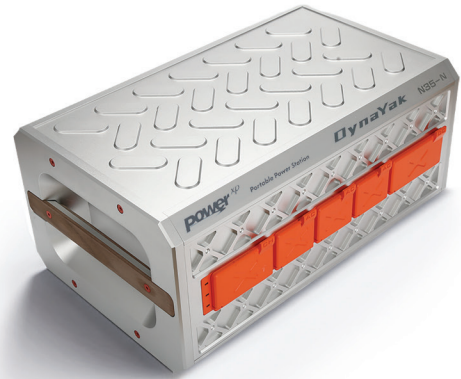
POWER^{XP}

DynaYak N35 Series Power Stations



POWERHOUSE**TWO**

The DynaYak N-35-N Story



It began with a disastrous trip in one of the harshest areas on earth. Follow latitude 35°N across China and you will cross what is referred to as the “DynaYak”, the great wilderness. Here temperatures drop to -40°C, and you will face thousands of miles of uncharted, barren wilderness, as unforgiving as it is stark.

It was here, in this forsaken place, that Zheng Yi, one of National Geographic's top wildlife photographers and documentary filmmakers met a life-or-death struggle. While crossing a frozen lake, his team underestimated the thickness of the ice on unexpectedly brackish water. As a result, both of their SUV's broke through the ice, and sank into the depths. It was by sheer determination they were able to get out of the sinking vehicles with their satellite phones, and a few meager supplies.

Fortunately, they were able to connect a satellite call before batteries died to request help. For the next 66 hours as they waited for rescue, they concentrated on survival. With temperatures as low as -40°C and at altitudes over 16,000 ft. every decision could be life threatening. This was very serious indeed.

Mr. Yi, a seasoned world traveler and outdoorsman has spent over 15 years in environments most only see on television: he is keenly aware of the challenges and dangers. It was during this time awaiting rescue that the thought came to him. Is there some type of power supply device that could provide potentially life saving electricity in the harshest environments? The answer was no.

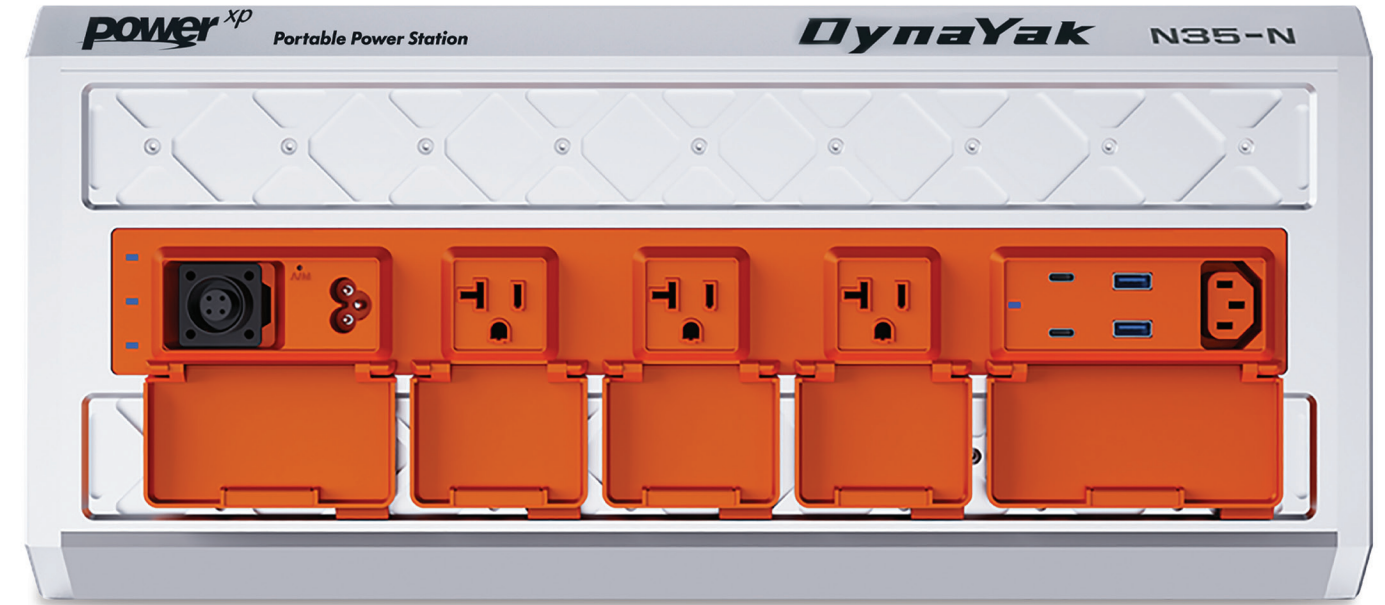
Upon his successful rescue and return to civilization, Mr. Yi contacted Cao Evans, a battery expert formerly with Panasonic. Together, they hatched the idea for Power XP's DynaYak N35 series. For nearly two years, Cao worked to develop the new technologies required to withstand the demands set forth by Mr. Yi.

Today, Power XP's DynaYak unit is available in two models. The N35, built to withstand temperatures down to -40°C (-40°F), and the N35-N, built to withstand temperatures down to -20°C (-4°F) for those of us who do not venture into the frozen realms of our earth! Both models are rated up to +50°C (120°F), and are waterproof, dustproof, shockproof, carry IP67 rating, and are housed in a nearly indestructible aluminum - magnesium alloy case.

So, this unit was named for the harsh land that inspired it. The DynaYak North 35° Latitude.

Wherever your great wilderness is, Power XP's DynaYak N35 series will power your adventure.

It might just save your life.



Power XP's DynaYak N35/ N35-N Portable Power Station Instruction Manual

IMPORTANT:
Study this manual carefully
before using the N35 or N35-N

Congratulations! You have purchased a safe, state of the art portable power station, expressly designed to give you many years of reliable power when you need it the most. The N35 series is a landmark in form, function, and design. It is the only unit ever made that has earned the IP67 water and dust resistance certification. Even after full immersion in 3 feet of water, the unit performs flawlessly.

Why is this important? The environmental conditions when you need power the most, could very well be the worst imaginable. Rain, snow, dust, smoke, debris, hazards from cold or heat, the list could go on. The DynaYak N35 series from Power XP is built to take nearly anything thrown at it and perform every time.

You have purchased a unit every bit as tough as you are. We urge you to put the time in here to get to know this amazing device, so you get the most out of it! Here are some important facts to get you started.

- **The N35's are housed in a custom Aluminum-Magnesium Alloy case. They provide unmatched strength, resists shock, and is an integral part of the cooling system. Expect it to feel warm, it's normal!**
- **The N35's performs where no others can. The rated operating temperature range is from -4°F to 122°F for the N35-N and an amazing -40°F - 122°F for the N35. Even at the lowest temperatures, the N35's will charge and discharge as normal and deliver more than 90% of their rated power.**
- **The N35 series is waterproof, dustproof and shockproof. They carry the IP67 certification and can even withstand being immersed in water. Not only is the entire unit rated at IP67, each component inside also carries that rating.**
- **The N35's have a rated lifespan of over 50,000 hours of use and even feature replaceable components. It could be the last power station you ever buy!**

The Journey Starts Here...

Unpack Your N35/N35-N Unit

Open the wooden case and remove your N35, the cables, and solar panels. The case will come in handy for transport or storage when you are not using the unit. The N35-N faceplate doors are orange, the N35's faceplate doors are green. Easy to tell them apart!

Now, it's time to get familiar with the controls.



Where's the switch?

If you have looked at or owned other power stations, you have seen some very confusing control panels, filled with buttons, readouts, multi-use switches that take time to figure out.

Not the N35 series. Each of the magnetic faceplate doors on the unit's front panel serve as both outlet covers and the switch that turns that output/input function on. Open the cover, it turns on, close it, it turns off. Simple, quick, and effective. Here is what each feature does. Let's start with the three power indicator lights.

• Power Indicator

When any door opens, the unit is powered on. This indicator will glow:

- Blue** – Full
- Purple** – Low Charge
- Red** – Recharge or in recharging mode

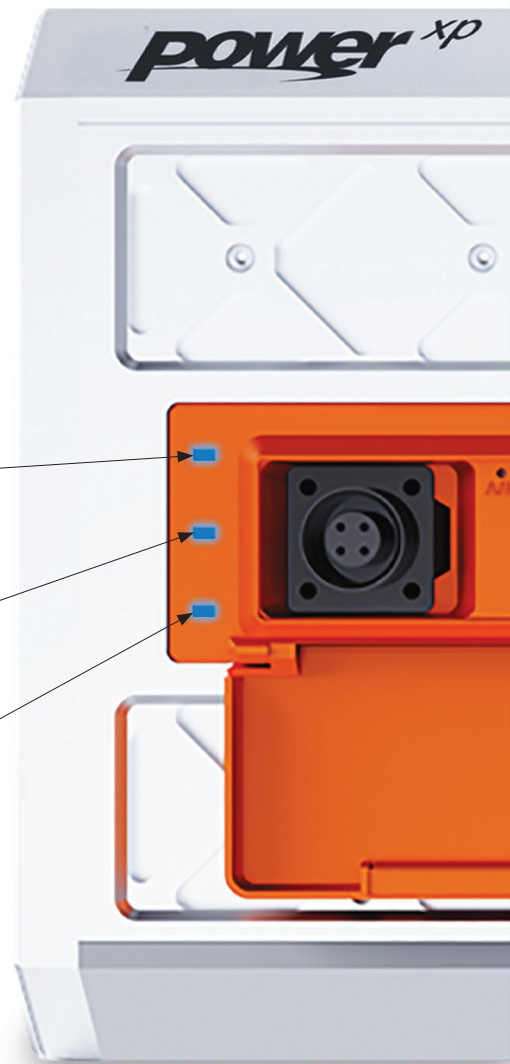
• Charging Indicator

When recharging the battery system, this indicator will:

- Glow Blue** when fully charged
- Glow Red** when charging

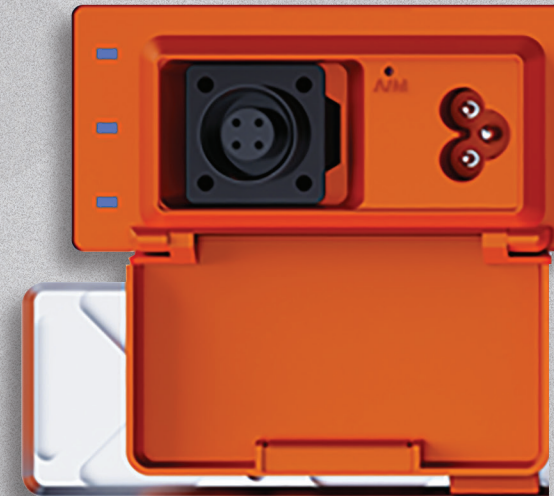
• AC Output Indicator

When any of the three AC outputs are engaged, this indicator glows **blue**.



Charging

Important: Give the unit a full charge before your first use. For safety in the shipping process, we factory charge the battery pack to about 30% of its capacity.



PV Solar / Quick Charge / Charge Port

These inputs serve all three methods of the charging function. The supplied AC cord, when plugged into a standard household outlet and the three-pin input shown here on the right of the first panel of the N35, will fully charge the unit in 5-7 hours. The N35 series automatically detects input voltage up to 240 volts, no worries about conversion!



Optional 750 W Quick Charging Unit shown here will fully charge the unit in an amazing 2 hours! Just plug the charger into your wall outlet, and the output into the four-pin input of the N35/ N35-N, seen on left in the image above.

120W Solar Array

The N35's are also rechargeable using the available 120W solar array and cable. The unit can support up to 600W of solar input, and yes you can be charging and using the unit simultaneously!

Unpack and open the solar array and position in the full sun. Attach the cable on the solar panels to the supplied cable and plug it into the four-pin input plug on the unit.

Charge time: 10 hours with one panel set. You can daisy chain up to 5 sets and cut charge time to 2-3 hours!

(Additional cable necessary for multiple panel arrays, not included. Consult professional help for proper multi panel wiring or visit www.powerhb.com/solarsafety)

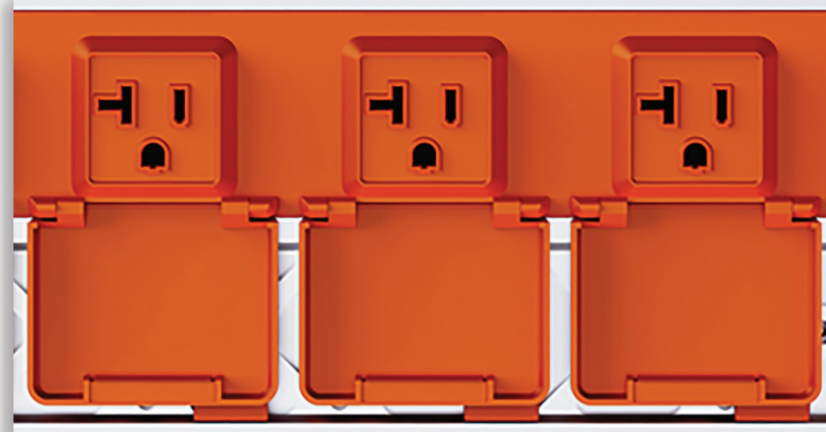


Finally, you can charge the N35 series from your car! Using the utility plug cable, you can charge your unit in 5-7 hours. It is recommended that the car be running during this process to assure preservation of your vehicle battery.

Power When and Where You Need It

Let's Talk About AC

Open any or all of the three magnetic doors in the center of the N35's faceplate and you have turned on 1800W of pure sine wave AC power that peaks at a whopping 3000W. Use one, two, or all three of these robust outlets to power whatever you need to use. When you are done, simply close the door, and the outlet is switched off.



DC for your Devices and More

Open the magnetic door and immediately the power activates and the indicator light glows informing you of the power available. In total, you have 200W of DC to work with combining all the possibilities.

First, you have 2 USB-C PD ports (60W each) and 2 USB-AQC 3.0 ports, (18W each), both quick charge. Charge your phones, laptops, tablets, cameras, smart watches, all your devices. You can use all these outputs at the same time! No worries, the N35's can handle it!

Finally, the N35's provides a 12V-10A / 24V-8A output for automotive use. With an available special cable, you can even jump start your car! To order accessories, visit www.dynayak.store



Tips on care and maintenance of your N35/N35-N

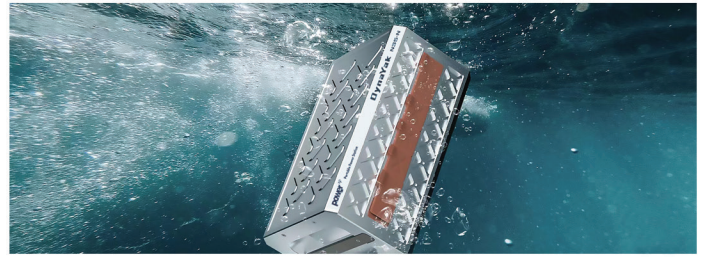
- **Protect your investment! Keep your unit clean. Go ahead.... wash it!**
- **The shipping crate is an excellent place to store it. Keep it in a cool dry place.**
- **Consider where you will store your unit. It should be in an easily accessible place in a time of need. It is perfectly safe to store in your home.**
- **For extended times of storage, it is recommended that you shut down the magnetic cover switch system. This is easily done by inserting a SIM card eject pin key (1.5MM diameter) into the A/M needle hole located between the charge input ports. Push once and the magnetic switches are disabled, push again to engage.**



Technical Data

Battery	System Battery Voltage	N35-N	N35	
	Battery Type	Li-Ni-Co-Mn	Li-Ni-Co-Mn	
	Capacity	35 Ah	35 Ah	
AC Output	Continuous Output	1800W - 1813 Watt-Hour Pure Sine Wave		
	Peak Output	3000W		
	Output Voltage Range	110V(±3%)		
	Output Frequency Range	60Hz±0.1 Hz		
DC Output	DC Output Interface	DC12V/10A, DC24V/8A		
	USB Output	USB-A/QC3.0 18W ×2	USB-Type C/ PD 60W×2	
Input	Voltage Range	100V~240V		
	AC Nominal Recharging Current	6A		
	Input Voltage of Solar Panel / Quick Charger	60V~80V		
	Current of Solar Panel / Quick Charger	12A		
	Car Charger Voltage	12V-17v		
	Car Charger Current	≤12A		
Others	No load loss	≤1.2A		
	Protection Grade (Water & Dust-proof)	IP67*		
	Temp range	N35-N	-4°F to 120°F	-20°C to +50°C
		N35 -EX	-40°F to 120°F	-40°C to +50°C
	Operating Altitude	16,404 ft., 5000 meters (capacity reduction above 9,842 ft. 3000 meters)		
	Protection	Over voltage, under voltage, over current, short circuit, charging polarity reversal, high low temperature capacity-reduction and protection, temperature compensation		
	Material	Aluminum Magnesium Alloy		
	Product Size	18.1" (460mm) × 11.2" (285mm) × 8.2" (208.5mm)		
	Carton Size	22.25" (565mm) × 13.75" (350mm) × 14.5" (370mm)		
	Weight	N35 (Green) - NW 50 lbs. (19kg) GW 53 lbs. (24 kg) N35-N (Orange) - NW 50 lbs (23kg) GW 62 lbs (28kg)		

Note:*The entire unit as well as the individual inner modules are certified to IP67 standard.



Important Reminders

Caution: The N35/N35-N is a powerful electrical storage module. Improper usage risks electric shock. Follow all directions when using this product.

1. Please read and keep this instructional manual.
2. This device is for adult use only. Not for use by children. Adult supervision required when children are present.
3. Do not insert any foreign object or fingers in the device. Only approved plugs.
4. Use only recommended accessories or risk personal injury, shock or fire.
5. Do not modify or use a damaged battery pack.
6. Do not connect broken cables or plugs to this unit.
7. Do not disassemble the unit. Should the unit require service, return to the authorized service team.
8. In the event of a malfunction, disconnect all cables from the unit.
9. Allow for good ventilation during recharging. The unit is air cooled.
10. If abused, it is possible that liquid could leak from the battery. Should this occur, do not touch. If liquid comes in contact with your skin, wash with soap and water, if contact with eyes, seek medical attention.
11. Do not expose the unit to fire.

Limited Warranty

Dynayak and its US affiliate, Powerhouse Two, warrants to the original purchaser that the unit will be free from defects and workmanship for a period of 12 months (One Year) from the date of purchase as shown on the original purchase invoice.

We will replace (at our expense) any modules of the Dynayak product that fail to operate during the applicable warranty period due to a defect in workmanship or material. A replacement product assumes the remaining warranty of the original product.

This warranty is limited to the original purchaser and is not transferrable.

Lifelong service outside the warranty period is available at the prevailing rates.

This warranty sets forth the total and exclusive warranty obligation by Dynayak and Powerhouse Two, we will not assume, nor authorize any person to assume for us, any other liability in connection with the sale or use of our products.

This warrant does not apply to product that has been:

Misused, abused, modified, damaged by accident, sold through an auction house or used for anything other than normal use as authorized in the current product literature. Any attempt to repair the unit by an unauthorized individual or company voids the warranty.

Questions about warranty or service?

dynayak@powerhb.com
407-654-5451 ext.113

YOUR PARTNER IN POWER.

For information call 407-654-5451 or visit www.powerhb.com

POWERHOUSE TWO